



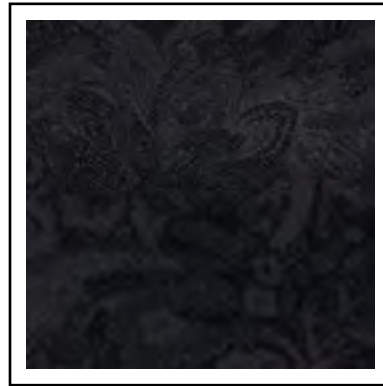
FOR RENTAL

# COAT FABRIC SWATCHES

## FOR RENTAL

Choose your look from our collection of colored tuxedos & suits

Reference page number for tuxedo & suit details



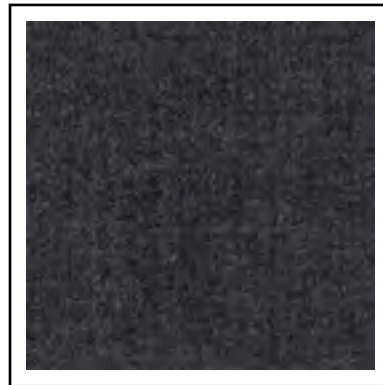
**Color:** Black Paisley  
**Style:** 182  
**Page:** 38



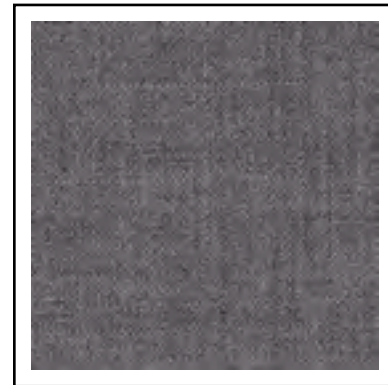
**Color:** Granite Paisley  
**Style:** 192  
**Page:** 37



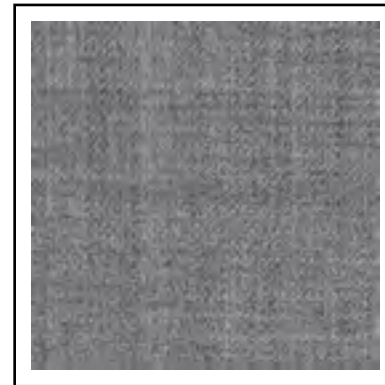
**Color:** Grey Portofino  
**Style:** 301  
**Page:** 41



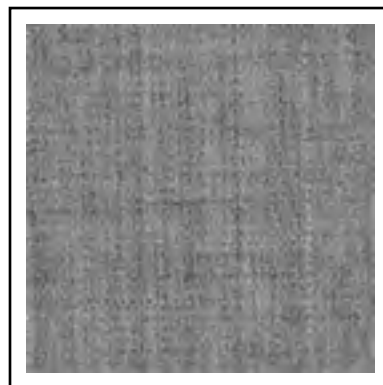
**Color:** Steel Grey  
**Styles:** 391, 392  
**Page:** 24, 25



**Color:** Medium Grey  
**Style:** 350  
**Page:** 19



**Color:** Heather Grey  
**Style:** 262  
**Page:** 31



**Color:** Heather Grey  
**Style:** 362  
**Page:** 42



**Color:** Burgundy  
**Style:** 201  
**Page:** 34



**Color:** Apple Red Paisley  
**Style:** 122  
**Page:** 39

# COAT FABRIC SWATCHES

## FOR RENTAL

Choose your look from our collection of colored tuxedos & suits

Reference page number for tuxedo & suit details



**Color:** Navy  
**Styles:** 371, 372  
**Page:** 22, 23



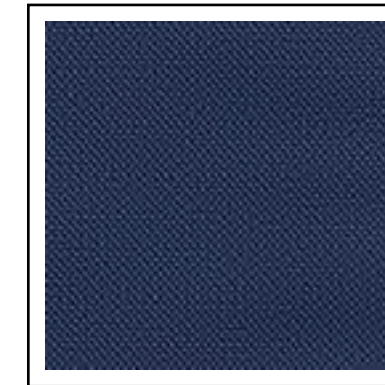
**Color:** Blue  
**Style:** 302  
**Page:** 20



**Color:** Cobalt Blue  
**Style:** 211  
**Page:** 32



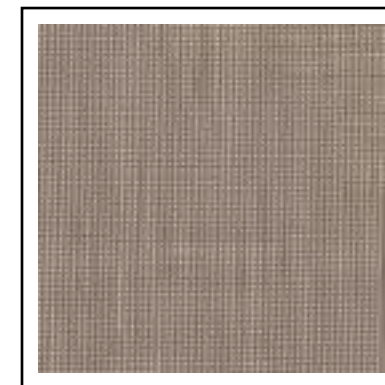
**Color:** Cobalt Paisley  
**Style:** 132  
**Page:** 40



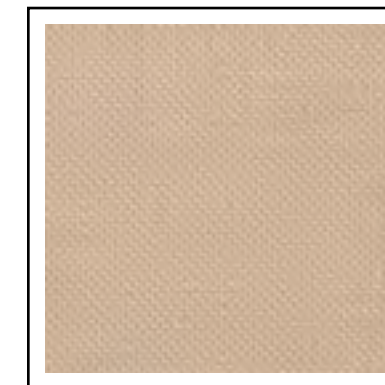
**Color:** Indigo Blue  
**Style:** 221  
**Page:** 33



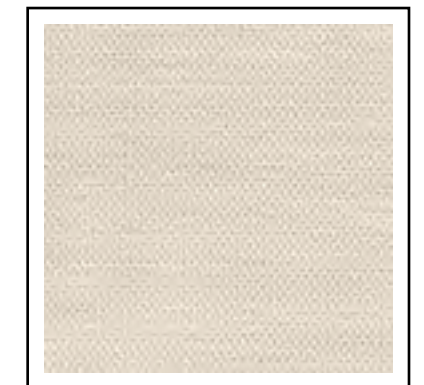
**Color:** White/Silver Paisley  
**Style:** 172  
**Page:** 36



**Color:** Sand  
**Style:** 202  
**Page:** 30



**Color:** Tan  
**Style:** 252  
**Page:** 35



**Color:** Tan  
**Style:** 272  
**Page:** 18

# MIX&MATCH FOR THE PERFECT LOOK!



## Groom Look

To Buy Style N192:  
see page 30 in the  
JFW For Purchase Catalog

## Groomsmen Look

To Rent Style 421:  
see page 17



# RENT OR BUY TO SUIT YOUR BUDGET!



## Groom Look

To Buy Style N272C:  
see page 5 in the  
JFW For Purchase Catalog

## Groomsmen Look

To Rent Style 421:  
see page 17



## Groom Look

To Buy Style N91C:  
see page 19 in the  
JFW For Purchase Catalog

## Groomsmen Look

To Rent Style 350:  
see page 19



## Groom Look

To Buy Style NHTC:  
see page 13 in the  
JFW For Purchase Catalog

## Groomsmen Look

To Rent Style 302:  
see page 20



## Groom Look

To Buy Style N292C:  
see page 12 in the  
JFW For Purchase Catalog

## Groomsmen Look

To Rent Style 202:  
see page 30



## Groom Look

To Buy Style NHGC:  
see page 15 in the  
JFW For Purchase Catalog

## Groomsmen Look

To Rent Style 421:  
see page 17





**921-Legacy Performance Stretch**  
Ultra Slim Fit Tuxedo  
by Michael Kors  
page 16



**421-Black Performance Stretch**  
Ultra Slim Fit Wedding Suit  
by Michael Kors  
page 17



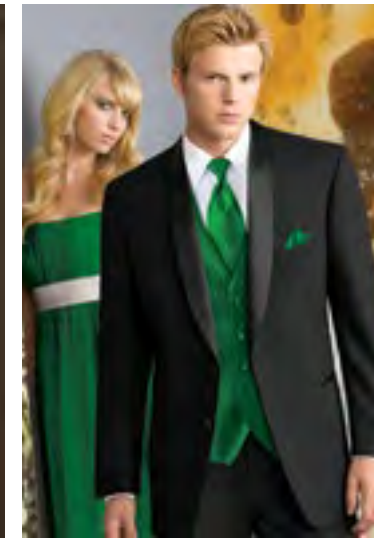
**981-Force Performance Stretch**  
Ultra Slim Fit Tuxedo  
by Michael Kors  
page 21



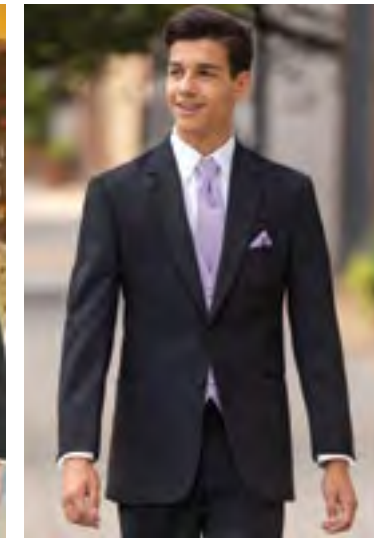
**471-Black Sterling**  
Ultra Slim Fit Wedding Suit  
by Michael Kors  
page 26



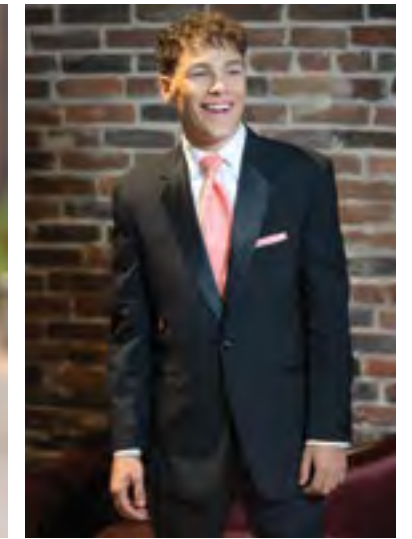
**182-Black Aries Paisley**  
Slim Fit Tuxedo  
by Mark of Distinction  
page 37



**822-Cyprus**  
Modern Fit Tuxedo  
by Stephen Geoffrey  
page 43



**852-Emerson**  
Modern Fit Tuxedo  
by Stephen Geoffrey  
page 44



**802-Black Troy**  
Modern Fit Tuxedo  
by Stephen Geoffrey  
page 45



**472-Black Sterling**  
Slim Fit Wedding Suit  
by Michael Kors  
page 27



**991-Berkeley**  
Ultra Slim Fit Tuxedo  
by Michael Kors  
page 28



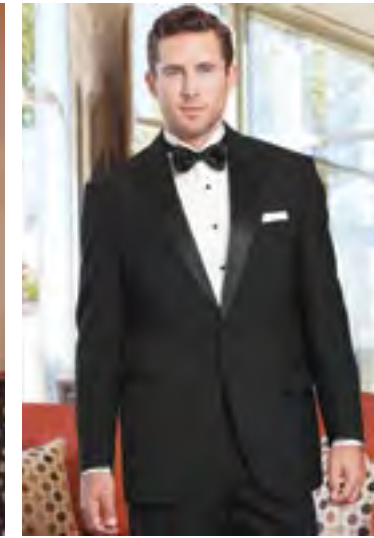
**990-Berkeley**  
Slim Fit Tuxedo  
by Michael Kors  
page 29



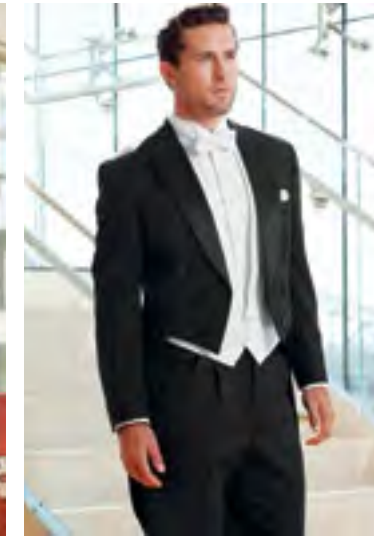
**192-Granite Aries Paisley**  
Slim Fit Tuxedo  
by Mark of Distinction  
page 36



**820-Classic Notch**  
Traditional Fit Tuxedo  
-  
page 50



**880-Classic Peak**  
Traditional Fit Tuxedo  
-  
page 52

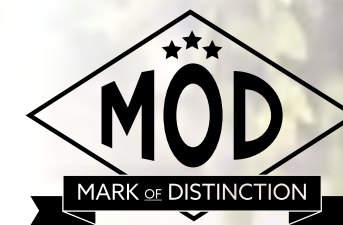


**588-Classic Peak Fulldress**  
Traditional Fit Tuxedo  
-  
page 53

## MICHAEL MICHAEL KORS

**Legacy Ultra Slim Fit  
Performance Stretch Tuxedo**  
Style 921

Photo Courtesy of:  
Joleen Willis Photography  
joleenwillis.com



**Black Aries Paisley  
Slim Fit Tuxedo**  
Style 182



# GREY STYLES



**350-Medium Grey Performance Stretch**  
Ultra Slim Fit Wedding Suit  
by Michael Kors  
page 19



**391-Steel Grey Sterling**  
Ultra Slim Fit Wedding Suit  
by Michael Kors  
page 24



**392-Steel Grey Sterling**  
Slim Fit Wedding Suit  
by Michael Kors  
page 25



**262-Heather Grey Clayton**  
Ultra Slim Fit Suit  
by Allure Men  
page 31

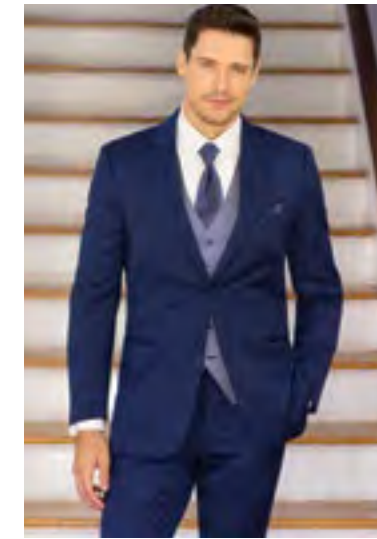


**362-Heather Grey Aspen**  
Slim Fit Tuxedo  
by Stephen Geoffrey  
page 41

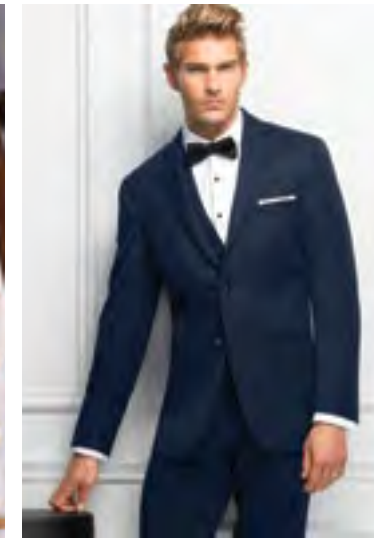


**301-Grey Portofino**  
Slim Fit Tuxedo  
by Tony Bowls  
page 42

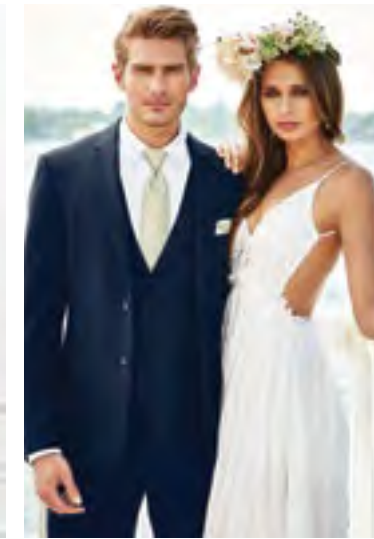
# BLUE/RED STYLES



**302-Blue Performance Stretch**  
Ultra Slim Fit Wedding Suit  
by Michael Kors  
page 20



**371-Navy Sterling**  
Ultra Slim Fit Wedding Suit  
by Michael Kors  
page 22



**372-Navy Sterling**  
Slim Fit Wedding Suit  
by Michael Kors  
page 23



**211-Cobalt Blue Tribeca**  
Ultra Slim Fit Tuxedo  
by Ike Behar  
page 32



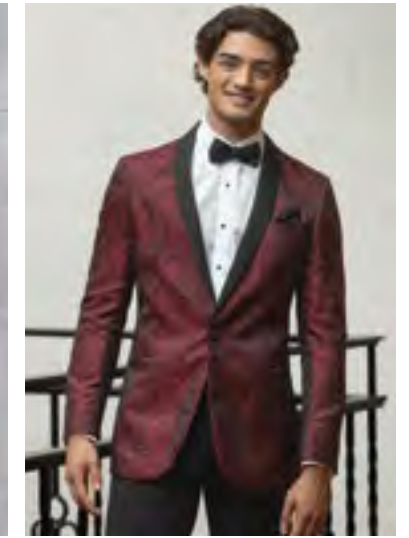
**221-Indigo Blue Lane**  
Ultra Slim Fit Tuxedo  
by Ike Behar  
page 33



**132-Cobalt Aries Paisley**  
Slim Fit Tuxedo  
by Mark of Distinction  
page 39



**201-Burgundy Empire**  
Ultra Slim Fit Tuxedo  
Kenneth Cole  
page 34



**122-Apple Red Aries Paisley**  
Slim Fit Tuxedo  
by Mark of Distinction  
page 38



## ALLURE MEN

**Heather Grey Clayton**  
Ultra Slim Fit Suit  
Style 262



## MICHAEL MICHAEL KORS

**Blue Performance Stretch**  
Ultra Slim Fit Wedding Suit  
Style 302

# TAN, WHITE & IVORY STYLES

# FASHION STYLES



**272-Tan Performance Stretch**  
Ultra Slim Fit Wedding Suit  
by Michael Kors  
page 18



**202-Sand Brunswick**  
Ultra Slim Fit Suit  
by Allure Men  
page 30



**252-Tan Havana**  
Slim Fit Suit  
by Lord West  
page 40



**172-White/Silver Aries Paisley**  
Slim Fit Tuxedo  
by Mark of Distinction  
page 35



**751-Waverly**  
Ultra Slim Fit Tuxedo  
by Ike Behar  
page 46



**712-White Troy**  
Modern Fit Tuxedo  
by Stephen Geoffrey  
page 47



**701-White Classic Shawl**  
Slim Fit Tuxedo  
by Stephen Geoffrey  
page 51



**601-Ivory Classic Shawl**  
Slim Fit Tuxedo  
by Stephen Geoffrey  
page 48



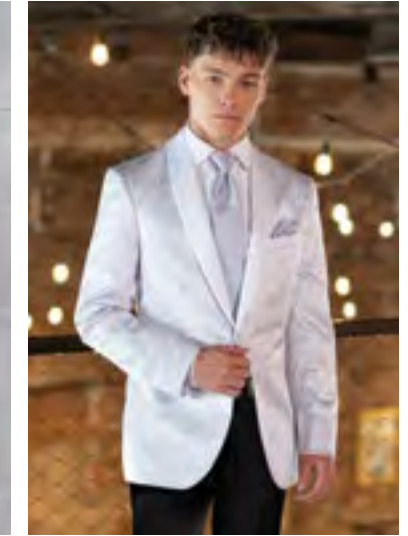
**602-Ivory Troy**  
Modern Fit Tuxedo  
by Stephen Geoffrey  
page 49



**211-Cobalt Blue Tribeca**  
Ultra Slim Fit Tuxedo  
by Ike Behar  
page 32



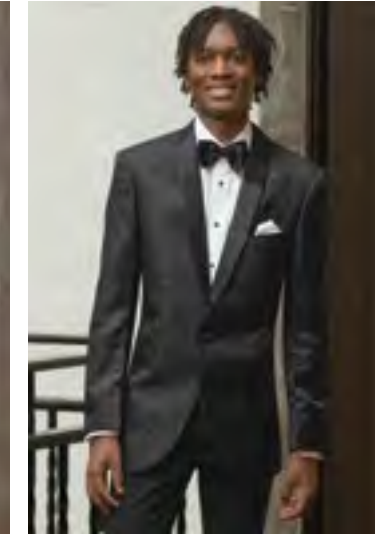
**201-Burgundy Empire**  
Ultra Slim Fit Tuxedo  
Kenneth Cole  
page 34



**172-White/Silver Aries Paisley**  
Slim Fit Tuxedo  
by Mark of Distinction  
page 35



**192-Granite Aries Paisley**  
Slim Fit Tuxedo  
by Mark of Distinction  
page 36



**182-Black Aries Paisley**  
Slim Fit Tuxedo  
by Mark of Distinction  
page 37



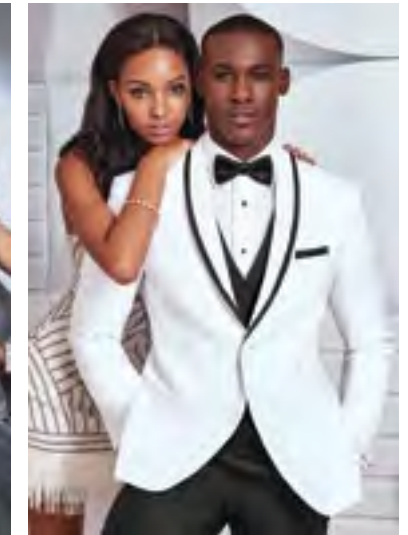
**122-Apple Red Aries Paisley**  
Slim Fit Tuxedo  
by Mark of Distinction  
page 38



**132-Cobalt Aries Paisley**  
Slim Fit Tuxedo  
by Mark of Distinction  
page 39



**301-Grey Portofino**  
Slim Fit Tuxedo  
by Tony Bowls  
page 42



**751-Waverly**  
Ultra Slim Fit Tuxedo  
by Ike Behar  
page 46

# MICHAEL KORS

## Legacy Performance Stretch Tuxedo

Style 921

**U** **ULTRA SLIM FIT**  
Trim and tapered styling, fits close to the body.

**Size Scale A2** - see page 54

**Men's coat sizes: 34-74**

**Boys' coat sizes: 3-18**

**921 pant sizes: 18-71**

### Features:

- ▶ Tailored to fit all body types
- ▶ CoolMax® performance stretch fabric
- ▶ Satin notch lapel, side-vented, 30<sup>1/2</sup>" length
- ▶ Shown with ultra slim fit pants with buttons to accommodate suspenders

### Fabric Content:

CoolMax® / Sorona® / Wool

### To order ensemble as shown:

Coat	<b>921</b>
Ultra Slim Fit Pants	<b>921</b>
Shirt (upcharge)	<b>96W</b>
Tie	<b>BSAT</b>
Fullback Vest	<b>F921</b>
Jewelry	<b>BLACK</b>
Formal Shoes (upcharge)	<b>BXS</b>
Pocket Square (purchase only)	<b>PWWH</b>

### Black Pant Option:

Ultra Slim Fit Pants **921**



**SCAN ME**  
for additional images



To BUY see page 4 in the JFW For Purchase Catalog



To BUY see page 8 in the JFW For Purchase Catalog



# MICHAEL KORS

## Black Performance Stretch Wedding Suit

Style 421

**U** **ULTRA SLIM FIT**  
Trim and tapered styling, fits close to the body.

**Size Scale A2** - see page 54

**Men's coat sizes: 34-74**

**Boys' coat sizes: 3-18**

**921 pant sizes: 18-71**

### Features:

- ▶ Tailored to fit all body types
- ▶ CoolMax® performance stretch fabric
- ▶ Self-framed notch lapel, side-vented, 29<sup>1/2</sup>" length
- ▶ Shown with ultra slim fit pants with belt loops and buttons to accommodate suspenders

### Fabric Content:

CoolMax® / Sorona® / Wool

### To order ensemble as shown:

Coat	<b>421</b>
Ultra Slim Fit Pants	<b>921</b>
Shirt (upcharge)	<b>96W</b>
Tie	<b>WXRW</b>
Fullback Vest	<b>F921</b>
Jewelry	<b>BLACK</b>
Formal Shoes (upcharge)	<b>BXS</b>
Pocket Square (purchase only)	<b>PWRW</b>
Belt (purchase only)	<b>NBLT</b>

### Black Pant Option:

Ultra Slim Fit Pants **921**



**SCAN ME**  
for additional images

# MICHAEL KORS

## Tan Performance Stretch Wedding Suit

Style 272

**U** **ULTRA SLIM FIT**  
Trim and tapered styling, fits close to the body.

**Size Scale:** A2 - see page 54

**Men's coat sizes:** 34-74

**Boys' coat sizes:** 3-18

**272 pant sizes:** 18-71

### Features:

- ▶ Tailored to fit all body types
- ▶ CoolMax® performance stretch fabric
- ▶ Self-framed notch lapel, side-vented, 29½" length
- ▶ Shown with ultra slim fit pants with belt loops and buttons to accommodate suspenders

### Fabric Content:

CoolMax® / Sorona® / Wool

### To order ensemble as shown:

Coat	<b>272</b>
Ultra Slim Fit Pants	<b>272</b>
Shirt (upcharge)	<b>96W</b>
Tie	<b>WLTE</b>
Fullback Vest	<b>F272</b>
Jewelry	<b>BLACK</b>
Formal Shoes (upcharge)	<b>COP</b>
Pocket Square (purchase only)	<b>PLTE</b>
Belt (purchase only)	<b>NBLT</b>

### Tan Pant Option:

Ultra Slim Fit Pants	<b>272</b>
----------------------	------------



**SCAN ME**  
for additional images



To BUY see page 5 in the JFW For Purchase Catalog



To BUY see page 9 in the JFW For Purchase Catalog



# MICHAEL KORS

## Medium Grey Performance Stretch Wedding Suit

Style 350

**U** **ULTRA SLIM FIT**  
Trim and tapered styling, fits close to the body.

**Size Scale A2** - see page 54

**Men's coat sizes:** 34-74

**Boys' coat sizes:** 3-18

**350 pant sizes:** 18-71

### Features:

- ▶ Tailored to fit all body types
- ▶ CoolMax® performance stretch fabric
- ▶ Self-framed notch lapel, side-vented, 29½" length
- ▶ Shown with ultra slim fit pants with belt loops and buttons to accommodate suspenders

### Fabric Content:

CoolMax® / Sorona® / Wool

### To order ensemble as shown:

Coat	<b>350</b>
Ultra Slim Fit Pants	<b>350</b>
Shirt (upcharge)	<b>96W</b>
Tie	<b>BNST</b>
Fullback Vest	<b>FNST</b>
Jewelry	<b>BLACK</b>
Formal Shoes (upcharge)	<b>COP</b>
Pocket Square (purchase only)	<b>PNST</b>
Belt (purchase only)	<b>NBLT</b>

### Grey Pant Option:

Ultra Slim Fit Pants	<b>350</b>
----------------------	------------



**SCAN ME**  
for additional images



# MICHAEL KORS

## Blue Performance Stretch Wedding Suit

Style 302

**U** **ULTRA SLIM FIT**  
Trim and tapered styling, fits close to the body.

**Size Scale A2** - see page 54

**Men's coat sizes: 34-74**

**Boys' coat sizes: 3-18**

**302 pant sizes: 18-71**

### Features:

- ▶ Tailored to fit all body types
- ▶ CoolMax® performance stretch fabric
- ▶ Self-framed notch lapel, side-vented, 30<sup>1</sup>/<sub>2</sub>" length
- ▶ Shown with ultra slim fit pants with belt loops and buttons to accommodate suspenders

### Fabric Content:

CoolMax® / Sorona® / Wool

### To order ensemble as shown:

Coat	<b>302</b>
Ultra Slim Fit Pants	<b>302</b>
Shirt (upcharge)	<b>96W</b>
Tie	<b>WNMB</b>
Fullback Vest	<b>FNMB</b>
Jewelry	<b>BLACK</b>
Formal Shoes (upcharge)	<b>COP</b>
Pocket Square (purchase only)	<b>PNMB</b>
Belt (purchase only)	<b>NBLT</b>

### Blue Pant Option:

Ultra Slim Fit Pants	<b>302</b>
----------------------	------------



**SCAN ME**  
for additional images



To BUY see page 7 in the JFW For Purchase Catalog



# MICHAEL KORS

## Force Performance Stretch Tuxedo

Style 981

**U** **ULTRA SLIM FIT**  
Trim and tapered styling, fits close to the body.

**Size Scale:** B - see page 54

**Men's coat sizes: 34-66**

**Boys' coat sizes: 3-18**

**921 pant sizes: 18-71**

### Features:

- ▶ Tailored to fit all body types
- ▶ CoolMax® performance stretch fabric
- ▶ Grosgrain notch lapel, side-vented, 29<sup>1</sup>/<sub>2</sub>" length
- ▶ Grosgrain trimmed pockets and covered buttons
- ▶ Shown with ultra slim fit pants with belt loops and buttons to accommodate suspenders

### Fabric Content:

CoolMax® / Sorona® / Wool

### To order ensemble as shown:

Coat	<b>981</b>
Ultra Slim Fit Pants	<b>921</b>
Shirt (upcharge)	<b>96W</b>
Tie	<b>WXGO</b>
Fullback Vest	<b>F921</b>
Jewelry	<b>BLACK</b>
Formal Shoes (upcharge)	<b>BXS</b>
Pocket Square (purchase only)	<b>PWGO</b>

### Black Pant Option:

Ultra Slim Fit Pants	<b>921</b>
----------------------	------------



**SCAN ME**  
for additional images

DIAMOND COLLECTION

# MICHAEL KORS

## Navy Sterling Wedding Suit

Style 371

**U** **ULTRA SLIM FIT**  
Trim and tapered styling, fits close to the body.

**Size Scale:** E - see page 54

**Men's coat sizes:** 34-44

**Boys' coat sizes:** N/A

**371 pant sizes:** 27-44

**Features:**

- ▶ Self-framed notch lapel, side-vented, 30<sup>1/2</sup>" length
- ▶ Shown with ultra slim fit pants with belt loops and buttons to accommodate suspenders

**Fabric Content:**

Venetian Super 130's Wool

**Companion Coat:**

Style 372 - Navy Sterling Slim Fit Wedding Suit; see page 23

**To order ensemble as shown:**

Coat	<b>371</b>
Ultra Slim Fit Pants	<b>371</b>
Shirt (upcharge)	<b>96W</b>
Tie	<b>BNNA</b>
Fullback Vest	<b>F372</b>
Jewelry	<b>BLACK</b>
Formal Shoes (upcharge)	<b>CXS</b>
Pocket Square (purchase only)	<b>PWWH</b>
Belt (purchase only)	<b>NBLT</b>

**Navy Pant Options:**

Ultra Slim Fit Pants	<b>371</b>
Modern Slim Fit Pants	<b>372</b>



**SCAN ME**  
for additional images

AVAILABLE IN  
TWO FITS:

**ULTRA SLIM FIT**  
Shown

**SLIM FIT**  
See page 23



To BUY see page 6 in the JFW For Purchase Catalog



# MICHAEL KORS

## Navy Sterling Wedding Suit

Style 372

**S** **SLIM FIT**  
Contemporary styling with a slimming appearance.

**Size Scale:** B - see page 54

**Men's coat sizes:** 34-66

**Boys' coat sizes:** 3-18

**372 pant sizes:** 18-65

**Features:**

- ▶ Self-framed notch lapel, side-vented, 30<sup>1/2</sup>" length
- ▶ Shown with modern slim fit pants with belt loops and buttons to accommodate suspenders

**Fabric Content:**

Venetian Super 130's Wool

**Companion Coat:**

Style 371 - Navy Sterling Ultra Slim Fit Wedding Suit; see page 22

**To order ensemble as shown:**

Coat	<b>372</b>
Modern Slim Fit Pants	<b>372</b>
Shirt (upcharge)	<b>96W</b>
Tie	<b>WFSE</b>
Fullback Vest	<b>F372</b>
Jewelry	<b>BLACK</b>
Formal Shoes (upcharge)	<b>CXS</b>
Pocket Square (purchase only)	<b>PFSE</b>
Belt (purchase only)	<b>NBLT</b>

**Navy Pant Options:**

Ultra Slim Fit Pants	<b>371</b>
Modern Slim Fit Pants	<b>372</b>



**SCAN ME**  
for additional images

AVAILABLE IN  
TWO FITS:

**SLIM FIT**  
Shown

**ULTRA SLIM FIT**  
See page 22

DIAMOND COLLECTION

DIAMOND COLLECTION

# MICHAEL KORS

## Steel Grey Sterling Wedding Suit

Style 391

**U** **ULTRA SLIM FIT**  
Trim and tapered styling, fits close to the body.

**Size Scale:** E - see page 54  
**Men's coat sizes:** 34-44  
**Boys' coat sizes:** N/A  
**391 pant sizes:** 27-44

**Features:**

- ▶ Self-framed notch lapel, side-vented, 30 1/2" length
- ▶ Shown with ultra slim fit pants with belt loops and buttons to accommodate suspenders

**Fabric Content:**

Venetian Super 130's Wool

**Companion Coat:**

Style 392 - Steel Grey Sterling Slim Fit Wedding Suit; see page 25

**To order ensemble as shown:**

Coat	<b>391</b>
Ultra Slim Fit Pants	<b>391</b>
Shirt (upcharge)	<b>96W</b>
Tie	<b>WNWI</b>
Fullback Vest	<b>F392</b>
Jewelry	<b>BLACK</b>
Formal Shoes (upcharge)	<b>CXS</b>
Pocket Square (purchase only)	<b>PNWI</b>
Belt (purchase only)	<b>NBLT</b>

**Steel Grey Pant Options:**

Ultra Slim Fit Pants	<b>391</b>
Modern Slim Fit Pants	<b>392</b>



**SCAN ME**  
for additional images

AVAILABLE IN  
TWO FITS:

**ULTRA SLIM FIT**  
Shown

**SLIM FIT**  
See page 25



To BUY see page 10 in the JFW For Purchase Catalog

AVAILABLE IN  
TWO FITS:

**SLIM FIT**  
Shown

**ULTRA SLIM FIT**  
See page 24

# MICHAEL KORS

## Steel Grey Sterling Wedding Suit

Style 392

**S** **SLIM FIT**  
Contemporary styling with a slimming appearance.

**Size Scale:** B - see page 54  
**Men's coat sizes:** 34-66  
**Boys' coat sizes:** 3-18  
**392 pant sizes:** 18-65

**Features:**

- ▶ Self-framed notch lapel, side-vented, 30 1/2" length
- ▶ Shown with modern slim fit pants with belt loops and buttons to accommodate suspenders

**Fabric Content:**

Venetian Super 130's Wool

**Companion Coat:**

Style 391 - Steel Grey Sterling Ultra Slim Fit Wedding Suit; see page 24

**To order ensemble as shown:**

Coat	<b>392</b>
Modern Slim Fit Pants	<b>392</b>
Shirt (upcharge)	<b>96W</b>
Tie	<b>BNST</b>
Fullback Vest	<b>F392</b>
Jewelry	<b>BLACK</b>
Formal Shoes (upcharge)	<b>COP</b>
Pocket Square (purchase only)	<b>PNST</b>
Belt (purchase only)	<b>NBLT</b>

**Steel Grey Pant Options:**

Ultra Slim Fit Pants	<b>391</b>
Modern Slim Fit Pants	<b>392</b>



**SCAN ME**  
for additional images

DIAMOND COLLECTION

DIAMOND COLLECTION

# MICHAEL KORS

## Black Sterling Wedding Suit

Style 471

**U** **ULTRA SLIM FIT**  
Trim and tapered styling, fits close to the body.

**Size Scale:** E - see page 54

**Men's coat sizes:** 34-44

**Boys' coat sizes:** N/A

**471 pant sizes:** 27-44

### Features:

- ▶ Self-framed notch lapel, side-vented, 30<sup>1/2</sup>" length
- ▶ Shown with ultra slim fit pants with belt loops and buttons to accommodate suspenders

### Fabric Content:

Venetian Super 130's Wool

### Companion Coat:

Style 472 - Black Sterling Slim Fit Wedding Suit; see page 27

### To order ensemble as shown:

Coat	<b>471</b>
Ultra Slim Fit Pants	<b>471</b>
Shirt (upcharge)	<b>96W</b>
Tie	<b>BXBL</b>
Fullback Vest	<b>F900</b>
Jewelry	<b>BLACK</b>
Formal Shoes (upcharge)	<b>BXS</b>
Pocket Square (purchase only)	<b>PWWH</b>
Belt (purchase only)	<b>NBLT</b>

### Black Pant Options:

Ultra Slim Fit Pants	<b>471</b>
Modern Slim Fit Pants	<b>472</b>



**SCAN ME**  
for additional images

AVAILABLE IN  
TWO FITS:  
**ULTRA SLIM FIT**  
Shown  
**SLIM FIT**  
See page 27



# MICHAEL KORS

## Black Sterling Wedding Suit

Style 472

**S** **SLIM FIT**  
Contemporary styling with a slimming appearance.

**Size Scale:** B - see page 54

**Men's coat sizes:** 34-66

**Boys' coat sizes:** 3-18

**472 pant sizes:** 18-65

### Features:

- ▶ Self-framed notch lapel, side-vented, 30<sup>1/2</sup>" length
- ▶ Shown with modern slim fit pants with belt loops and buttons to accommodate suspenders

### Fabric Content:

Venetian Super 130's Wool

### Companion Coat:

Style 471 - Black Sterling Ultra Slim Fit Wedding Suit; see page 26

### To order ensemble as shown:

Coat	<b>472</b>
Modern Slim Fit Pants	<b>472</b>
Shirt (upcharge)	<b>96W</b>
Tie	<b>BXBL</b>
Fullback Vest	<b>F900</b>
Jewelry	<b>BLACK</b>
Formal Shoes (upcharge)	<b>BXS</b>
Pocket Square (purchase only)	<b>PWWH</b>
Belt (purchase only)	<b>NBLT</b>

### Black Pant Options:

Ultra Slim Fit Pants	<b>471</b>
Modern Slim Fit Pants	<b>472</b>



**SCAN ME**  
for additional images

AVAILABLE IN  
TWO FITS:  
**SLIM FIT**  
Shown  
**ULTRA SLIM FIT**  
See page 26



DIAMOND COLLECTION

DIAMOND COLLECTION

# MICHAEL KORS

## Berkeley Tuxedo Style 991

**U** **ULTRA SLIM FIT**  
Trim and tapered styling, fits close to the body.

**Size Scale:** E - see page 54  
**Men's coat sizes:** 34-44  
**Boys' coat sizes:** N/A  
**991 pant sizes:** 18-59

**Features:**

- ▶ Grosgrain notch lapel, side-vented, 30 1/2" length
- ▶ Grosgrain trimmed pockets
- ▶ Shown with ultra slim fit pants with no stripe

**Fabric Content:**

Venetian Super 130's Wool

**Companion Coat:**

Style 990 - Berkeley Slim Fit; see page 29

**To order ensemble as shown:**

Coat	<b>991</b>
Ultra Slim Fit Pants	<b>991</b>
Shirt (upcharge)	<b>96W</b>
Tie	<b>BXBL</b>
Fullback Vest	<b>F900</b>
Jewelry	<b>BLACK</b>
Formal Shoes (upcharge)	<b>BDS</b>
Pocket Square (purchase only)	<b>PWWH</b>

**Black Pant Options:**

Ultra Slim Fit Pants	<b>991</b>
Modern Slim Fit Pants	<b>990</b>



**SCAN ME**  
for additional images

**AVAILABLE IN  
TWO FITS:**  
**ULTRA SLIM FIT**  
Shown  
**SLIM FIT**  
See page 29

# MICHAEL KORS

## Berkeley Tuxedo Style 990

**S** **SLIM FIT**  
Contemporary styling with a slimming appearance.

**Size Scale:** B - see page 54  
**Men's coat sizes:** 34-66  
**Boys' coat sizes:** 3-18  
**990 pant sizes:** 18-65

**Features:**

- ▶ Grosgrain notch lapel, side-vented, 30 1/2" length
- ▶ Grosgrain trimmed pockets
- ▶ Shown with modern slim fit pants with grosgrain piping on the leg

**Fabric Content:**

Venetian Super 130's Wool

**Companion Coat:**

Style 991 - Berkeley Ultra Slim Fit; see page 28

**To order ensemble as shown:**

Coat	<b>990</b>
Modern Slim Fit Pants	<b>990</b>
Shirt (upcharge)	<b>96W</b>
Tie	<b>BXBL</b>
Fullback Vest	<b>F900</b>
Jewelry	<b>BLACK</b>
Formal Shoes (upcharge)	<b>BDS</b>
Pocket Square (purchase only)	<b>PWWH</b>

**Black Pant Options:**

Ultra Slim Fit Pants	<b>991</b>
Modern Slim Fit Pants	<b>990</b>



**SCAN ME**  
for additional images

**AVAILABLE IN  
TWO FITS:**  
**SLIM FIT**  
Shown  
**ULTRA SLIM FIT**  
See page 28



DIAMOND COLLECTION

DIAMOND COLLECTION

# ALLURE MEN

## Sand Brunswick Suit

Style 202

**U** **ULTRA SLIM FIT**  
Trim and tapered styling, fits close to the body.

**Size Scale:** B - see page 54

**Men's coat sizes:** 34-66

**Boys' coat sizes:** 3-18

**202 pant sizes:** 18-65

### Features:

- ▶ Tailored to fit all body types
- ▶ Self-framed notch lapel, side-vented, 30" length
- ▶ Shown with ultra slim fit pants with belt loops and buttons to accommodate suspenders

### Fabric Content:

60/40 Super 130's Wool Blend

### To order ensemble as shown:

Coat	<b>202</b>
Ultra Slim Fit Pants	<b>202</b>
Shirt (upcharge)	<b>96W</b>
Tie	<b>WFWI</b>
Fullback Vest	<b>F202</b>
Jewelry	<b>BLACK</b>
Formal Shoes (upcharge)	<b>COP</b>
Pocket Square (purchase only)	<b>PFWI</b>
Belt (purchase only)	<b>NBLT</b>

### Sand Pant Option:

Ultra Slim Fit Pants	<b>202</b>
----------------------	------------



**SCAN ME**  
for additional images



To BUY see page 11 in the JFW For Purchase Catalog

# ALLURE MEN

## Heather Grey Clayton Suit

Style 262

**U** **ULTRA SLIM FIT**  
Trim and tapered styling, fits close to the body.

**Size Scale:** A2 - see page 54

**Men's coat sizes:** 34-74

**Boys' coat sizes:** 3-18

**262 pant sizes:** 18-71

### Features:

- ▶ Tailored to fit all body types
- ▶ Self-framed notch lapel, side-vented, 29 7/8" length
- ▶ Shown with ultra slim fit pants with belt loops and buttons to accommodate suspenders

### Fabric Content:

Super 130's Wool

### To order ensemble as shown:

Coat	<b>262</b>
Ultra Slim Fit Pants	<b>262</b>
Shirt (upcharge)	<b>96W</b>
Tie	<b>BXNA</b>
Fullback Vest	<b>F262</b>
Jewelry	<b>BLACK</b>
Formal Shoes (upcharge)	<b>CXS</b>
Pocket Square (purchase only)	<b>PWNA</b>

### Heather Grey Pant Option:

Ultra Slim Fit Pants	<b>262</b>
----------------------	------------



**SCAN ME**  
for additional images



**Cobalt Blue  
Tribeca Tuxedo**  
Style 211

**U** **ULTRA SLIM FIT**  
Trim and tapered styling, fits close to the body.

**Size Scale:** D - see page 54  
**Men's coat sizes:** 34-60  
**Boys' coat sizes:** 3-18  
**211 pant sizes:** 18-59

**Features:**

- ▶ Tailored to fit all body types
- ▶ Black satin peak lapel, side-vented, 30" length
- ▶ Black satin double besom pockets
- ▶ Shown with ultra slim fit pants with no stripe

**Fabric Content:**

Super 120's Wool

**To order ensemble as shown:**

Coat	<b>211</b>
Ultra Slim Fit Pants	<b>211</b>
Shirt (upcharge)	<b>96W</b>
Tie	<b>BXBL</b>
Fullback Vest	<b>EXBL</b>
Jewelry	<b>BLACK</b>
Formal Shoes (upcharge)	<b>BDS</b>
Pocket Square (purchase only)	<b>PWWH</b>

**Cobalt Blue Pant Option:**

Ultra Slim Fit Pants **211**

**Black Pant Options:**

Ultra Slim Fit Pants **991**  
Modern Slim Fit Pants **990**



**SCAN ME**  
for additional images



**Indigo Blue  
Lane Tuxedo**  
Style 221

**U** **ULTRA SLIM FIT**  
Trim and tapered styling, fits close to the body.

**Size Scale:** B - see page 54  
**Men's coat sizes:** 34-66  
**Boys' coat sizes:** 3-18  
**221 pant sizes:** 18-65

**Features:**

- ▶ Tailored to fit all body types
- ▶ Satin-edged peak lapel, side-vented, 29 1/4" length
- ▶ Shown with ultra slim fit pants with no stripe

**Fabric Content:**

Super 120's Wool

**To order ensemble as shown:**

Coat	<b>221</b>
Ultra Slim Fit Pants	<b>221</b>
Shirt (upcharge)	<b>96W</b>
Tie	<b>BXCP</b>
Fullback Vest	<b>EXCP</b>
Jewelry	<b>BLACK</b>
Formal Shoes (upcharge)	<b>CXS</b>
Pocket Square (purchase only)	<b>PWCP</b>

**Indigo Blue Pant Option:**

Ultra Slim Fit Pants **221**



**SCAN ME**  
for additional images



# KENNETH COLE

## Burgundy Empire Tuxedo

Style 201

**U** **ULTRA SLIM FIT**  
Trim and tapered styling, fits close to the body.

**Size Scale:** D - see page 54

**Men's coat sizes:** 34-60

**Boys' coat sizes:** 3-18

**991 pant sizes:** 18-59

### Features:

- ▶ Tailored to fit all body types
- ▶ Black satin peak lapel, side-vented, 30<sup>1/2</sup>" length
- ▶ Black satin double besom pockets
- ▶ Shown with black ultra slim fit pants with no stripe

### Fabric Content:

Super 120's Wool

### To order ensemble as shown:

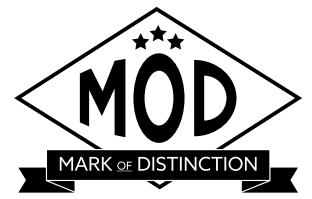
Coat	<b>201</b>
Ultra Slim Fit Pants	<b>991</b>
Shirt (upcharge)	<b>96W</b>
Tie	<b>BSAT</b>
Jewelry	<b>BLACK</b>
Formal Shoes (upcharge)	<b>BDS</b>
Pocket Square (purchase only)	<b>PWWH</b>

### Black Pant Options:

Ultra Slim Fit Pants	<b>991</b>
Modern Slim Fit Pants	<b>990</b>



**SCAN ME**  
for additional images



## White/Silver Aries Paisley Tuxedo

Style 172



To BUY see page 28 in the JFW For Purchase Catalog



**S** **SLIM FIT**  
Contemporary styling with a slimming appearance.

**Size Scale:** F - see page 54

**Men's coat sizes:** 34-50 (even sizes only)

**Boys' coat sizes:** 14-18 (even sizes only)

**N11P pant sizes:** 26-44 (even sizes only)

### Features:

- ▶ **Limited size scale**
- ▶ White satin shawl lapel, side-vented, 30<sup>1/2</sup>" length
- ▶ Fabric covered buttons
- ▶ Shown with Black Euro Slim Stretch Suit Pants for purchase

### Fabric Content:

100% Polyester

### To order ensemble as shown:

Coat	<b>172</b>
Euro Slim Pants (purchase only)	<b>N11P</b>
Shirt (upcharge)	<b>96W</b>
Tie	<b>WFPT</b>
Jewelry	<b>BLACK</b>
Formal Shoes (purchase only)	<b>NSSKS</b>
Pocket Square (purchase only)	<b>PFPT</b>

### White Pant Options:

Euro Slim Pants (purchase only)	<b>N17P</b>
Modern Slim Fit Pants	<b>750</b>

### Black Pant Options:

Euro Slim Pants (purchase only)	<b>N11P</b>
Ultra Slim Fit Pants	<b>921</b>
Modern Slim Fit Pants	<b>990</b>



**SCAN ME**  
for additional images







## Granite Aries Paisley Tuxedo

Style 192



**SLIM FIT**  
Contemporary styling with a slimming appearance.

**Size Scale:** G - see page 54

**Men's coat sizes:** 34-66 (even sizes only)

**Boys' coat sizes:** 3-18 (even sizes only)

**N11P pant sizes:** 26-44 (even sizes only)

### Features:

- ▶ Black satin shawl lapel, side-vented, 30<sup>1/2</sup>" length
- ▶ Fabric covered buttons
- ▶ Shown with Black Euro Slim Stretch Suit Pants for purchase

### Fabric Content:

100% Polyester

### To order ensemble as shown:

Coat	<b>192</b>
Euro Slim Pants (purchase only)	<b>N11P</b>
Shirt (upcharge)	<b>96W</b>
Tie	<b>BSAT</b>
Jewelry	<b>BLACK</b>
Formal Shoes (purchase only)	<b>NCSSS</b>
Pocket Square (purchase only)	<b>PWBL</b>

### Black Pant Options:

Euro Slim Pants (purchase only)	<b>N11P</b>
Ultra Slim Fit Pants	<b>921</b>
Modern Slim Fit Pants	<b>990</b>



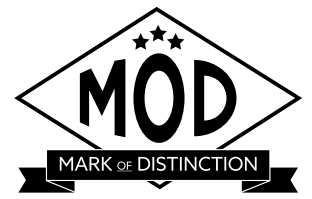
**SCAN ME**  
for additional images



To BUY see page 30 in the JFW For Purchase Catalog



To BUY see page 29 in the JFW For Purchase Catalog



## Black Aries Paisley Tuxedo

Style 182



**SLIM FIT**  
Contemporary styling with a slimming appearance.

**Size Scale:** G - see page 54

**Men's coat sizes:** 34-66 (even sizes only)

**Boys' coat sizes:** 3-18 (even sizes only)

**N11P pant sizes:** 26-44 (even sizes only)

### Features:

- ▶ Black satin shawl lapel, side-vented, 30<sup>1/2</sup>" length
- ▶ Fabric covered buttons
- ▶ Shown with Black Euro Slim Stretch Suit Pants for purchase

### Fabric Content:

100% Polyester

### To order ensemble as shown:

Coat	<b>182</b>
Euro Slim Pants (purchase only)	<b>N11P</b>
Shirt (upcharge)	<b>96W</b>
Tie	<b>BSAT</b>
Jewelry	<b>BLACK</b>
Formal Shoes (purchase only)	<b>NBSKS</b>
Pocket Square (purchase only)	<b>PWWH</b>

### Black Pant Options:

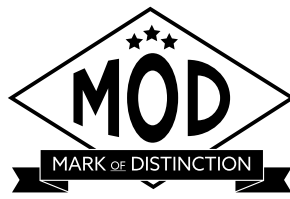
Euro Slim Pants (purchase only)	<b>N11P</b>
Ultra Slim Fit Pants	<b>921</b>
Modern Slim Fit Pants	<b>990</b>



**SCAN ME**  
for additional images



DIAMOND COLLECTION



## Apple Red Aries Paisley Tuxedo

Style 122



**SLIM FIT**  
Contemporary styling with a slimming appearance.

**Size Scale:** F - see page 54

**Men's coat sizes:** 34-50 (even sizes only)

**Boys' coat sizes:** 14-18 (even sizes only)

**N11P pant sizes:** 26-44 (even sizes only)

### Features:

- ▶ **Limited size scale**
- ▶ Black satin shawl lapel, side-vented, 30<sup>1</sup>/<sub>2</sub>" length
- ▶ Fabric covered buttons
- ▶ Shown with Black Euro Slim Stretch Suit Pants for purchase

### Fabric Content:

100% Polyester

### To order ensemble as shown:

Coat	<b>122</b>
Euro Slim Pants (purchase only)	<b>N11P</b>
Shirt (upcharge)	<b>96W</b>
Tie	<b>BSAT</b>
Jewelry	<b>BLACK</b>
Formal Shoes (purchase only)	<b>NCSSS</b>
Pocket Square (purchase only)	<b>PWBL</b>

### Black Pant Options:

Euro Slim Pants (purchase only)	<b>N11P</b>
Ultra Slim Fit Pants	<b>921</b>
Modern Slim Fit Pants	<b>990</b>

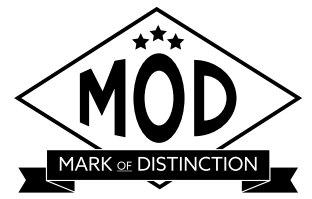


**SCAN ME**  
for additional images

LIMITED  
SIZE SCALE



LIMITED  
SIZE SCALE



## Cobalt Aries Paisley Tuxedo

Style 132



**SLIM FIT**  
Contemporary styling with a slimming appearance.

**Size Scale:** F - see page 54

**Men's coat sizes:** 34-50 (even sizes only)

**Boys' coat sizes:** 14-18 (even sizes only)

**N11P pant sizes:** 26-44 (even sizes only)

### Features:

- ▶ **Limited size scale**
- ▶ Black satin shawl lapel, side-vented, 30<sup>1</sup>/<sub>2</sub>" length
- ▶ Fabric covered buttons
- ▶ Shown with Black Euro Slim Stretch Suit Pants for purchase

### Fabric Content:

100% Polyester

### To order ensemble as shown:

Coat	<b>132</b>
Euro Slim Pants (purchase only)	<b>N11P</b>
Shirt (upcharge)	<b>96W</b>
Tie	<b>BSAT</b>
Jewelry	<b>BLACK</b>
Formal Shoes (purchase only)	<b>NBLVS</b>
Pocket Square (purchase only)	<b>PWBL</b>

### Black Pant Options:

Euro Slim Pants (purchase only)	<b>N11P</b>
Ultra Slim Fit Pants	<b>921</b>
Modern Slim Fit Pants	<b>990</b>



**SCAN ME**  
for additional images

**Tan Havana Suit**  
Style 252

**S** **SLIM FIT**  
Contemporary styling with a slimming appearance.

**Size Scale:** B2 - see page 54  
**Men's coat sizes:** 34-66  
**Boys' coat sizes:** 3-18  
**252 pant sizes:** 18-65

**Features:**

- ▶ Self notch lapel, bone buttons, side-vented, 30" length
- ▶ Shown with modern slim fit pants with no stripe

**Fabric Content:**

Ultra Fine Poly / Wool Blend

**To order ensemble as shown:**

Coat	<b>252</b>
Modern Slim Fit Pants	<b>252</b>
Shirt (upcharge)	<b>96W</b>
Tie	<b>WRCP</b>
Fullback Vest	<b>F252</b>
Jewelry	<b>BLACK</b>
Formal Shoes (upcharge)	<b>CXS</b>
Pocket Square (purchase only)	<b>PKWH</b>

**Tan Pant Options:**

Ultra Slim Fit Pants	<b>251</b>
Modern Slim Fit Pants	<b>252</b>



**Heather Grey Aspen Tuxedo**  
Style 362

**S** **SLIM FIT**  
Contemporary styling with a slimming appearance.

**Size Scale:** B - see page 54  
**Men's coat sizes:** 34-66  
**Boys' coat sizes:** 3-18  
**362 pant sizes:** 18-65

**Features:**

- ▶ Satin-edged notch lapel, side-vented, 30 1/2" length
- ▶ Shown with modern slim fit pants with no stripe

**Fabric Content:**

100% Wool

**To order ensemble as shown:**

Coat	<b>362</b>
Modern Slim Fit Pants	<b>362</b>
Shirt (upcharge)	<b>96W</b>
Tie	<b>BXWH</b>
Fullback Vest	<b>F362</b>
Jewelry	<b>BLACK</b>
Formal Shoes (upcharge)	<b>CXS</b>
Pocket Square (purchase only)	<b>PWWH</b>

**Grey Pant Options:**

Ultra Slim Fit Pants	<b>361</b>
Modern Slim Fit Pants	<b>362</b>

**Grey Portofino Tuxedo**

Style 301



**SLIM FIT**  
Contemporary styling with a slimming appearance.

**Size Scale:** H - see page 54

**Men's coat sizes:** 34-56

**Boys' coat sizes:** 14-18

**850 pant sizes:** 18-71

**Features:**

- ▶ **Limited size scale**
- ▶ Black satin peak lapel, non-vented, 30" length
- ▶ Black satin double besom pockets
- ▶ Shown with modern slim fit pants with a beaded stripe

**Fabric Content:**

55/45 Super Fine Wool Blend

**To order ensemble as shown:**

Coat	<b>301</b>
Modern Slim Fit Pants	<b>850</b>
Shirt (upcharge)	<b>96W</b>
Tie	<b>WKBL</b>
Fullback Vest	<b>F900</b>
Jewelry	<b>BLACK</b>
Formal Shoes (upcharge)	<b>BDS</b>
Pocket Square (purchase only)	<b>PSWH</b>

**Black Pant Options:**

Ultra Slim Fit Pants	<b>991</b>
Modern Slim Fit Pants	<b>850</b>

LIMITED SIZE SCALE



stephengeoffrey

**Cyprus Tuxedo**  
Style 822



**MODERN FIT**  
Fashion-forward styling with a flattering appearance.

**Size Scale:** B2 - see page 54

**Men's coat sizes:** 34-66

**Boys' coat sizes:** 3-18

**850 pant sizes:** 18-71

**Features:**

- ▶ Satin shawl lapel, non-vented, 31 1/2" length
- ▶ Shown with modern slim fit pants with a beaded stripe

**Fabric Content:**

100% Tropical Worsted Wool

**To order ensemble as shown:**

Coat	<b>822</b>
Modern Slim Fit Pants	<b>850</b>
Shirt (upcharge)	<b>76W</b>
Tie	<b>WSKG</b>
Fullback Vest	<b>SYKG</b>
Jewelry	<b>BLACK</b>
Formal Shoes (upcharge)	<b>BDS</b>
Pocket Square (purchase only)	<b>PSKG</b>

**Black Pant Option:**

Modern Slim Fit Pants	<b>850</b>
-----------------------	------------



stephengeoffrey

## Emerson Tuxedo

Style 852



**MODERN FIT**  
Fashion-forward styling with a flattering appearance.

**Size Scale:** H - see page 54

**Men's coat sizes:** 34-56

**Boys' coat sizes:** 14-18

**850 pant sizes:** 18-71

### Features:

- ▶ **Limited size scale**
- ▶ Grosgrain notch lapel, non-vented, 3 1/2" length
- ▶ Grosgrain buttons
- ▶ Shown with modern slim fit pants with a beaded stripe

### Fabric Content:

100% Tropical Worsted Wool

### To order ensemble as shown:

Coat	<b>852</b>
Modern Slim Fit Pants	<b>850</b>
Shirt (upcharge)	<b>96W</b>
Tie	<b>WKLA</b>
Fullback Vest	<b>HRLA</b>
Jewelry	<b>BLACK</b>
Formal Shoes (upcharge)	<b>BDS</b>
Pocket Square (purchase only)	<b>PKLA</b>

### Black Pant Option:

Modern Slim Fit Pants	<b>850</b>
-----------------------	------------



LIMITED  
SIZE SCALE



LIMITED  
SIZE SCALE



stephengeoffrey

## Black Troy Tuxedo

Style 802



**MODERN FIT**  
Fashion-forward styling with a flattering appearance.

**Size Scale:** H - see page 54

**Men's coat sizes:** 34-56

**Boys' coat sizes:** 14-18

**850 pant sizes:** 18-71

### Features:

- ▶ **Limited size scale**
- ▶ Satin notch lapel, non-vented, 3 1/2" length
- ▶ Shown with modern slim fit pants with a beaded stripe

### Fabric Content:

100% Worsted Wool

### To order ensemble as shown:

Coat	<b>802</b>
Modern Slim Fit Pants	<b>850</b>
Shirt (upcharge)	<b>96W</b>
Tie	<b>WRCO</b>
Fullback Vest	<b>HRCO</b>
Jewelry	<b>BLACK</b>
Formal Shoes (upcharge)	<b>BDS</b>
Pocket Square (purchase only)	<b>PKCO</b>

### Black Pant Option:

Modern Slim Fit Pants	<b>850</b>
-----------------------	------------



PLATINUM COLLECTION

PLATINUM COLLECTION

**Waverly Tuxedo**  
Style 751

**U** **ULTRA SLIM FIT**  
Trim and tapered styling, fits close to the body.

**Size Scale:** D - see page 54  
**Men's coat sizes:** 34-60  
**Boys' coat sizes:** 3-18  
**991 pant sizes:** 18-59

**Features:**

- ▶ Tailored to fit all body types
- ▶ Self shawl lapel edged in black satin, center-vented, 30" length
- ▶ Shown with black ultra slim fit pants with no stripe

**Fabric Content:**  
100% Polyester

**To order ensemble as shown:**

Coat	<b>751</b>
Ultra Slim Fit Pants	<b>991</b>
Shirt (upcharge)	<b>96W</b>
Tie	<b>BXBL</b>
Fullback Vest	<b>EXBL</b>
Jewelry	<b>BLACK</b>
Formal Shoes (upcharge)	<b>BDS</b>
Pocket Square (purchase only)	<b>PWBL</b>

**White Pant Option:**

Modern Slim Fit Pants **750**

**Black Pant Options:**

Ultra Slim Fit Pants **991**

Modern Slim Fit Pants **850**



**White Troy Tuxedo**  
Style 712

**M** **MODERN FIT**  
Fashion-forward styling with a flattering appearance.

**Size Scale:** B - see page 54  
**Men's coat sizes:** 34-66  
**Boys' coat sizes:** 3-18  
**750 pant sizes:** 18-65

**Features:**

- ▶ Satin notch lapel, non-vented, 31 1/2" length
- ▶ Shown with modern slim fit pants with a beaded stripe

**Fabric Content:**  
100% Polyester

**To order ensemble as shown:**

Coat	<b>712</b>
Modern Slim Fit Pants	<b>750</b>
Shirt (upcharge)	<b>96W</b>
Tie	<b>BXWH</b>
Fullback Vest	<b>EXWH</b>
Jewelry	<b>PEARL</b>
Formal Shoes (upcharge)	<b>WAS</b>
Pocket Square (purchase only)	<b>PWWH</b>

**White Pant Option:**

Modern Slim Fit Pants **750**





stephengeoffrey

## Ivory Classic Shawl Tuxedo

Style 601



### SLIM FIT

Contemporary styling with a slimming appearance.

**Size Scale:** B - see page 54

**Men's coat sizes:** 34-66

**Boys' coat sizes:** 3-18

**991 pant sizes:** 18-59

### Features:

- ▶ Self shawl lapel, side-vented, 30<sup>1/2</sup>" length
- ▶ Shown with black ultra slim fit pants with no stripe

### Fabric Content:

100% Polyester

### To order ensemble as shown:

Coat	<b>601</b>
Ultra Slim Fit Pants	<b>991</b>
Shirt (upcharge)	<b>96W</b>
Tie	<b>BSAT</b>
Sash	<b>CUMB</b>
Jewelry	<b>BLACK</b>
Formal Shoes (upcharge)	<b>BDS</b>
Pocket Square (purchase only)	<b>PWBL</b>

### Ivory Pant Option:

Modern Slim Fit Pants **650**

### Black Pant Options:

Ultra Slim Fit Pants **991**

Modern Slim Fit Pants **850**



To BUY see page 27 in the JFW For Purchase Catalog



stephengeoffrey

## Ivory Troy Tuxedo

Style 602



### MODERN FIT

Fashion-forward styling with a flattering appearance.

**Size Scale:** B2 - see page 54

**Men's coat sizes:** 34-66

**Boys' coat sizes:** 3-18

**650 pant sizes:** 18-65

### Features:

- ▶ Satin notch lapel, non-vented, 31<sup>1/2</sup>" length
- ▶ Shown with modern slim fit pants with a beaded stripe

### Fabric Content:

100% Polyester

### To order ensemble as shown:

Coat	<b>602</b>
Modern Slim Fit Pants	<b>650</b>
Shirt (upcharge)	<b>96W</b>
Tie	<b>WRGO</b>
Fullback Vest	<b>HRGO</b>
Jewelry	<b>BLACK</b>
Formal Shoes (upcharge)	<b>COP</b>
Pocket Square (purchase only)	<b>PKGO</b>

### Ivory Pant Option:

Modern Slim Fit Pants **650**



PLATINUM COLLECTION

PLATINUM COLLECTION

## Classic Notch Tuxedo

Style 820



**TRADITIONAL FIT**  
A classic, fuller cut tuxedo.

**Size Scale:** A - see page 54;  
expanded sizes available

**Men's coat sizes:** 34-74

**Boys' coat sizes:** 2-18

**850 pant sizes:** 18-71

### Features:

- ▶ Satin notch lapel, non-vented, 31½" length
- ▶ Shown with modern slim fit pants with a beaded stripe

### Fabric Content:

100% Worsted Wool

### To order ensemble as shown:

Coat	<b>820</b>
Modern Slim Fit Pants	<b>850</b>
Shirt	<b>85W</b>
Tie	<b>BSAT</b>
Sash	<b>CUMB</b>
Jewelry	<b>BLACK</b>
Formal Shoes (upcharge)	<b>BDS</b>
Pocket Square (purchase only)	<b>PSWH</b>

### Black Pant Option:

Modern Slim Fit Pants	<b>850</b>
-----------------------	------------



To BUY see page 27 in the JFW For Purchase Catalog

## White Classic Shawl Tuxedo

Style 701



**SLIM FIT**  
Contemporary styling with a slimming appearance.

**Size Scale:** B2 - see page 54

**Men's coat sizes:** 34-66

**Boys' coat sizes:** 3-18

**850 pant sizes:** 18-71

### Features:

- ▶ Self shawl lapel, flap pockets, non-vented, 30" length
- ▶ Shown with black modern slim fit pants with a beaded stripe

### Fabric Content:

100% Polyester

### To order ensemble as shown:

Coat	<b>701</b>
Modern Slim Fit Pants	<b>850</b>
Shirt	<b>85W</b>
Tie	<b>BSAT</b>
Sash	<b>CUMB</b>
Jewelry	<b>BLACK</b>
Formal Shoes (upcharge)	<b>BDS</b>
Pocket Square (purchase only)	<b>PSBL</b>

### White Pant Option:

Modern Slim Fit Pants	<b>750</b>
-----------------------	------------

### Black Pant Option:

Modern Slim Fit Pants	<b>850</b>
-----------------------	------------



## Classic Peak Tuxedo

Style 880



### TRADITIONAL FIT

A classic, fuller cut tuxedo.

**Size Scale:** A - see page 54;

expanded sizes available

**Men's coat sizes: 34-74**

**Boys' coat sizes: 2-18**

**850 pant sizes: 18-71**

### Features:

- ▶ Satin peak lapel, center-vented, 31½" length
- ▶ Shown with modern slim fit pants with a beaded stripe

### Fabric Content:

100% Worsted Wool

### To order ensemble as shown:

Coat	<b>880</b>
Modern Slim Fit Pants	<b>850</b>
Shirt	<b>85W</b>
Tie	<b>BSAT</b>
Sash	<b>CUMB</b>
Jewelry	<b>BLACK</b>
Formal Shoes (upcharge)	<b>BDS</b>
Pocket Square (purchase only)	<b>PSWH</b>

### Black Pant Option:

Modern Slim Fit Pants **850**



## Classic Peak Full-dress Tuxedo

Style 588



### TRADITIONAL FIT

A classic, fuller cut tuxedo.

**Size Scale:** D - see page 54

**Men's coat sizes: 34-60**

**Boys' coat sizes: 3-18**

**850 pant sizes: 18-71**

### Features:

- ▶ Six-button full-dress styling
- ▶ Satin peak lapel, center-vented tail, 42" length
- ▶ Shown with modern slim fit pants with a beaded stripe

### Fabric Content:

100% Tropical Worsted Wool

### To order ensemble as shown:

Coat	<b>588</b>
Modern Slim Fit Pants	<b>850</b>
Shirt	<b>36W</b>
Tie	<b>BPIQ</b>
Vest	<b>VPIQ</b>
Jewelry	<b>PEARL</b>
Formal Shoes (upcharge)	<b>BDS</b>
Pocket Square (purchase only)	<b>PSWH</b>

### Black Pant Option:

Modern Slim Fit Pants **850**